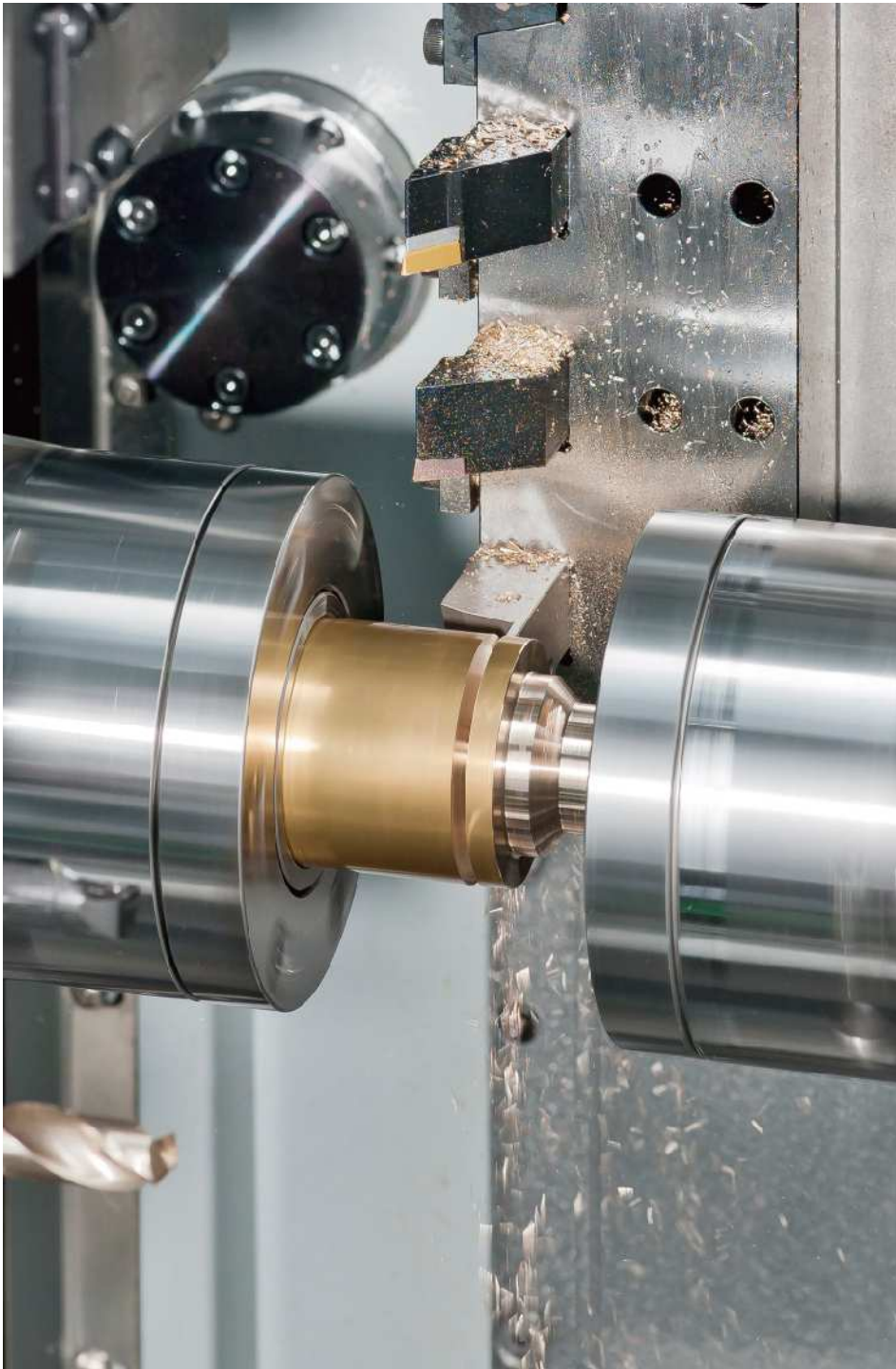


Global Metal Platform Service Provider

SEOJIN SYSTEM

SEOJIN  SYSTEM



CONTENTS

Chapter1.

Metal Infrastructure Service Provider

Chapter2.

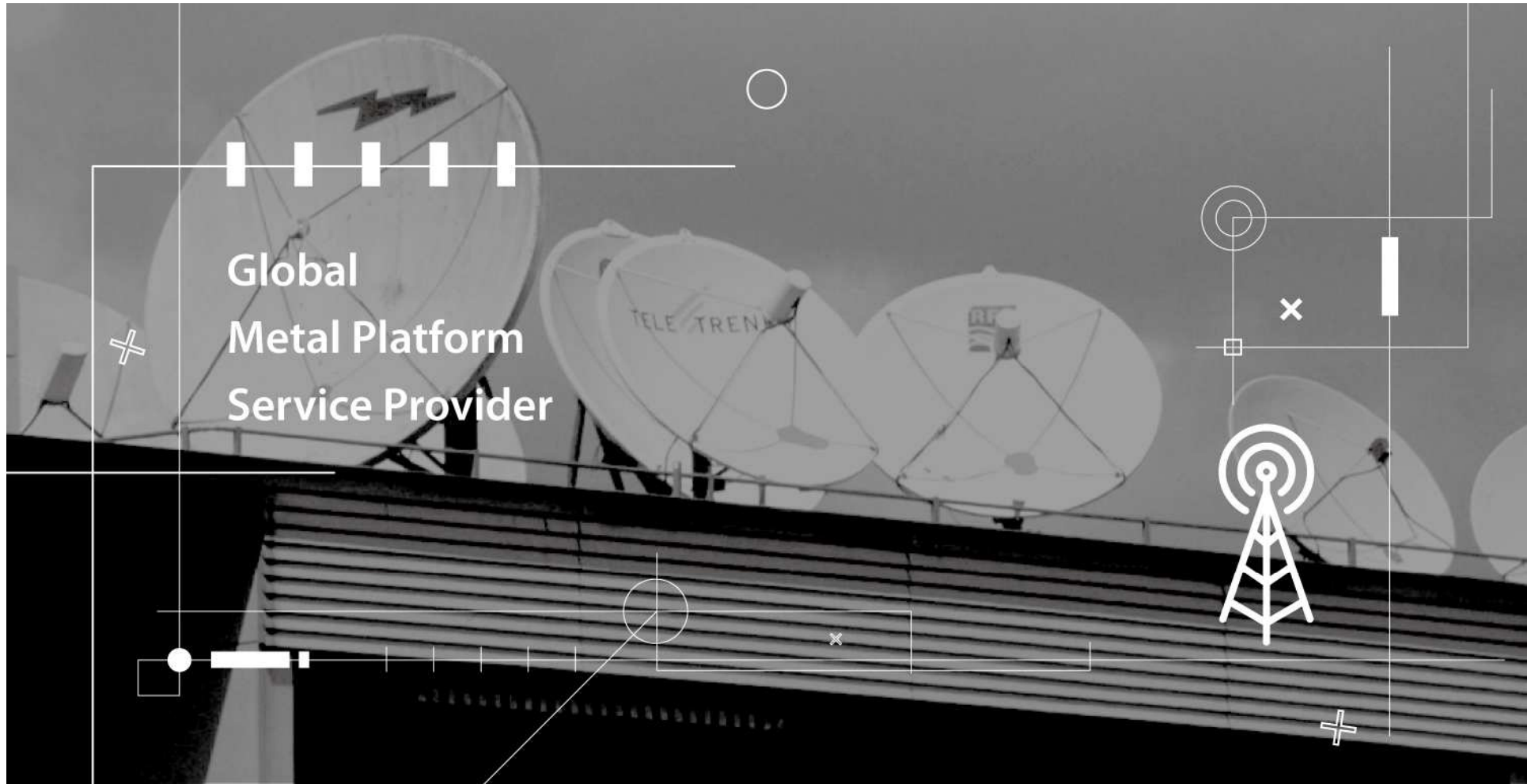
Machines and Facilities

Chapter3.

Main Products and Customers

Chapter4.

New production lines and investments



Global
Metal Platform
Service Provider

Chapter1. Metal Platform Service Provider

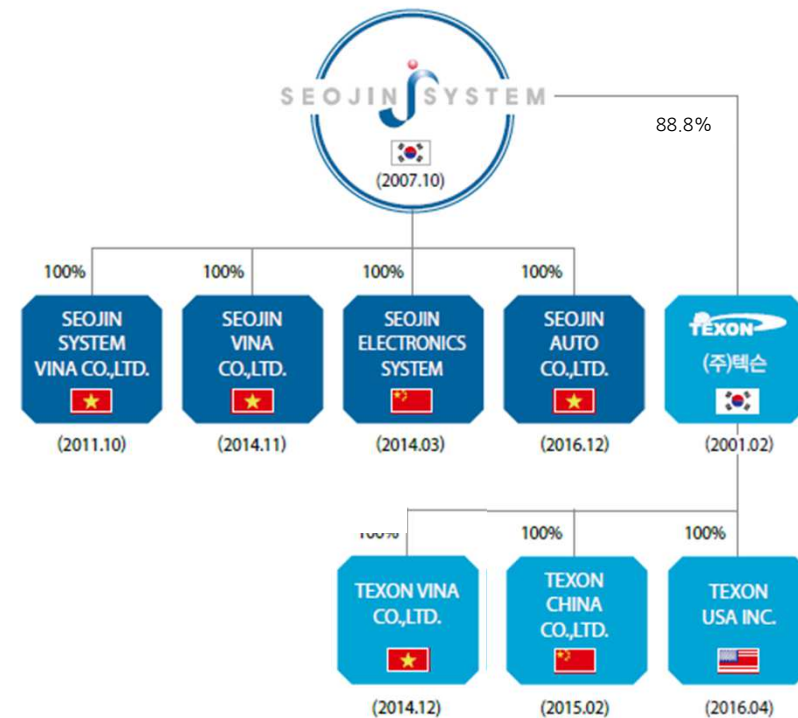
1. Company Outline
2. Organization Chart
3. History
4. Sales Turnover
5. Location Status

1. Company Outline

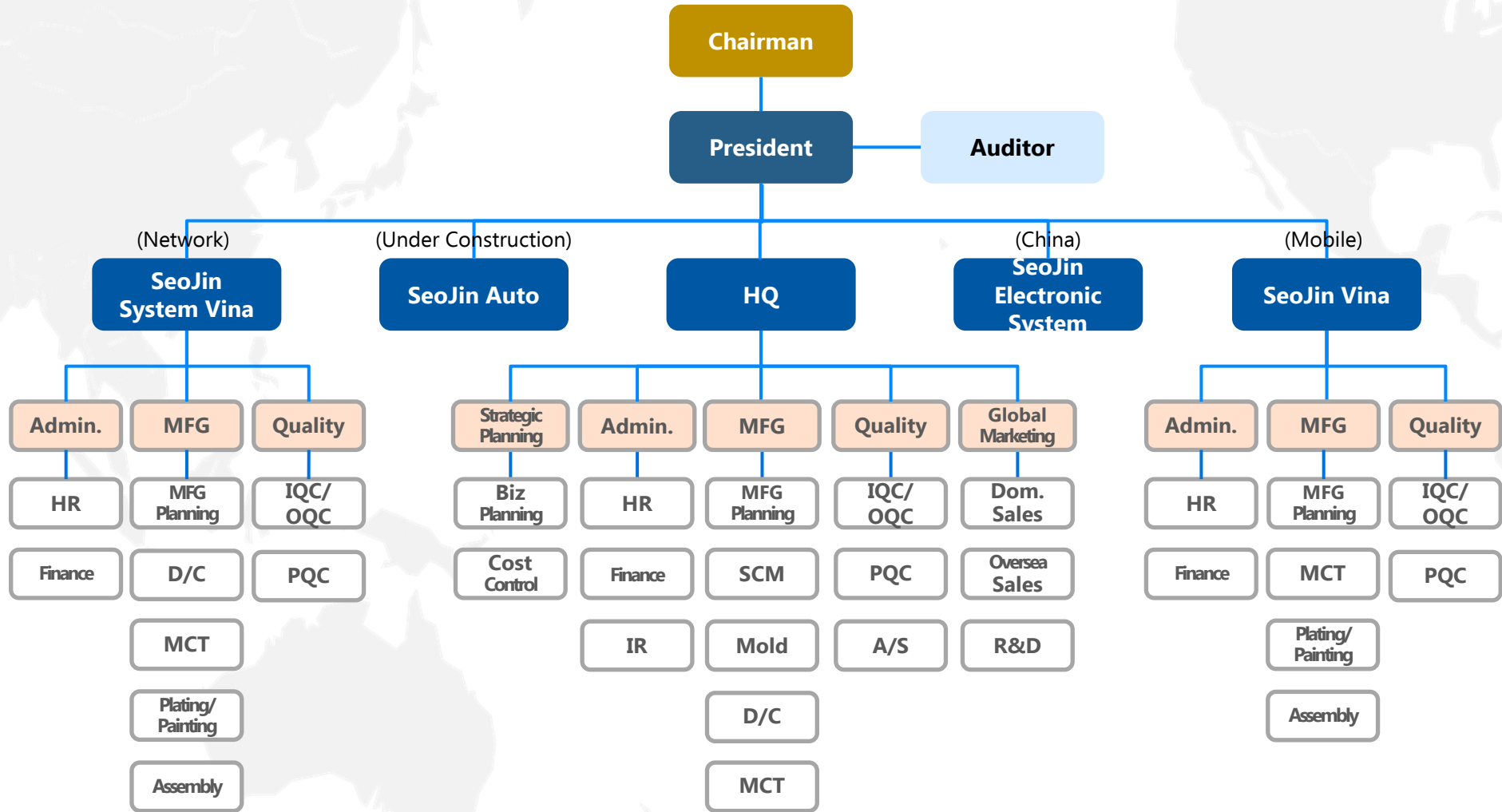
Company Overview of SeoJin System & Affiliates



Company Name	SeoJin System Co., Ltd.
President	Jun, Dong-Kyu
Est.	July 1996 (Corporate : Oct 2007)
Capital	\$3.05mil USD
Employees	HQ 186 (Total 10,187)
Business Field	Mobile Network Equipment Manufacturing
Main Products	Telecom Equip., Mobile Phone Metal Frame, Semicon Equip. etc...
HQ Location	20-22 Sanoep-ro, Ojeong-gu, Bucheon-si, Gyeonggi-do, Korea



2. Organization Chart



3. History

1996 - 2003

Founded

- 1996.07** SeoJin Tech Founded (Seoul)
- 1997.03** MCT Expand (2ea)
- 1999.09** MCT Expand (2ea)
- 2003.05** Relocation (InCheon)
- 2003.05** Sisterhood Relation(InHa Tech. College)

2004 - 2009

Development

- 2004.11** ISO 9001 Cert.
- 2005.10** JungWoo Diecasting Ets. (Affiliate)
- 2007.08** Incorporated SeoJin System Co., Ltd.
- 2008.03** R&D Lab Cert.
- 2008.04** INNO-BIZ Cert. & Venture Cert.
- 2008.06** Registered Vendor GM DaeWoo Automotive
- 2009.01** TS 16949 Cert.

2010 - 2013

Vietnam Expansion

- 2010.02** Relocation (BuCheon Ojeong Industrial Zone)
- 2010.12** 2nd Factory Est. (AnSung)
- 2011.11** Est. Company in Vietnam (SeoJin System Vina)
- 2012.10** Est. Vietnam Factory (BacNinh Vietnam)
- 2013.03** Introduction of ERP System
- 2013.04** Expanding DieCasting Equipment (1,650ton)
- 2013.08** Registered as Samsung's 1st Vendor

2014 - 2015

Business Growth

- 2014.02** MCT Expand (30ea – SeoJin System Vina)
- 2014.03** Started Biz With Samsung ShenZhen
- 2014.03** Expand Sheet Metal Equipment
- 2014.04** Expand Painting Line(4 Powder lines)
- 2014.05** Est. China Shenzhen Company
- 2014.08** Expand MCT 40ea (SeoJin System Vina)
- 2014.10** 삼Started Biz with Samsung Vietnam Mobile Div.
- 2015.02** Completed Vietnam Mobile Factory
- 2015.12** Acquisition of Texon

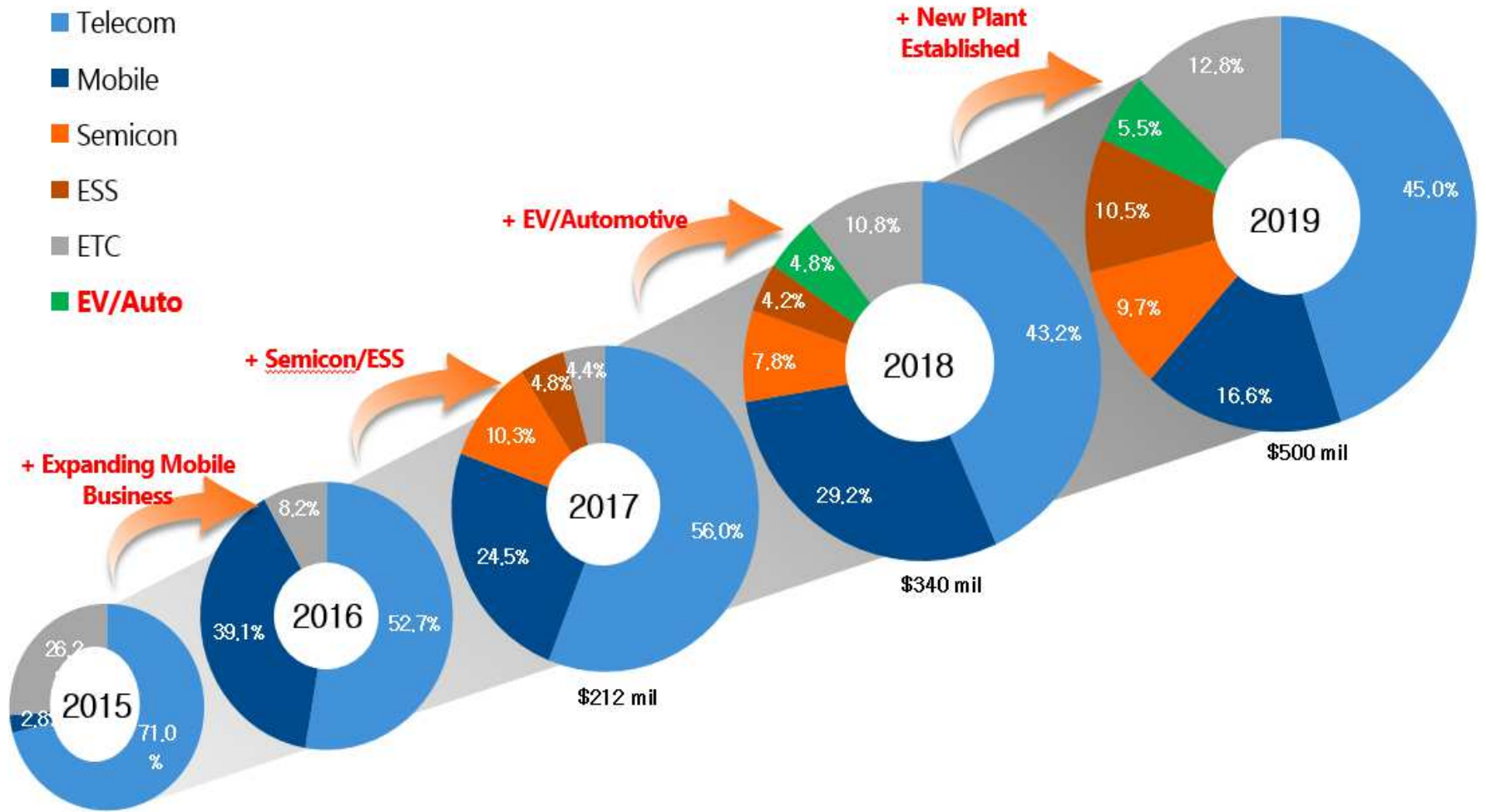
2016 - Current

Business Diversification

- 2016.02** Expand Plastic Injection
- 2016.08** Aluminum Alloy Factory Completed
- 2016.11** Electrical Vehicle Battery Housing Patent Registered
- 2016.12** Est. SeoJin Auto
- 2017.03** KOSDAQ Listed

4. Sales Amount

Percentage of Industries in Business Growth



5. Company location status



Company name	Seojin System Headquarter
Location	Bucheon city, Kyunggido, Korea



Company name	Texon Korea
Location	Uijungbu/ Gumi / Suwon, Korea



	Seojin System Korea
Main product	Telecom/LED Case
Floor	7,095㎡ (76,400ft ²)
Employees	186
Est.	Oct. 2007

	Texon Uijungbu	Texon Gumi	Texon USA
Main product	Telecom/Semi conduct/ESS equipment		
Floor	4,110㎡ (44,130ft ²)	7,582㎡ (81,600ft ²)	1,416㎡ (15,247ft ²)
Employees	35	138	6
Est.	Feb. 2001	June, 2009	March, 2016

5. Company location status



Oversea corporation	Seojin System Vina, Seojin Auto, Texon Vina
Location	Vietnam BacNinh Province / BacGiang Province

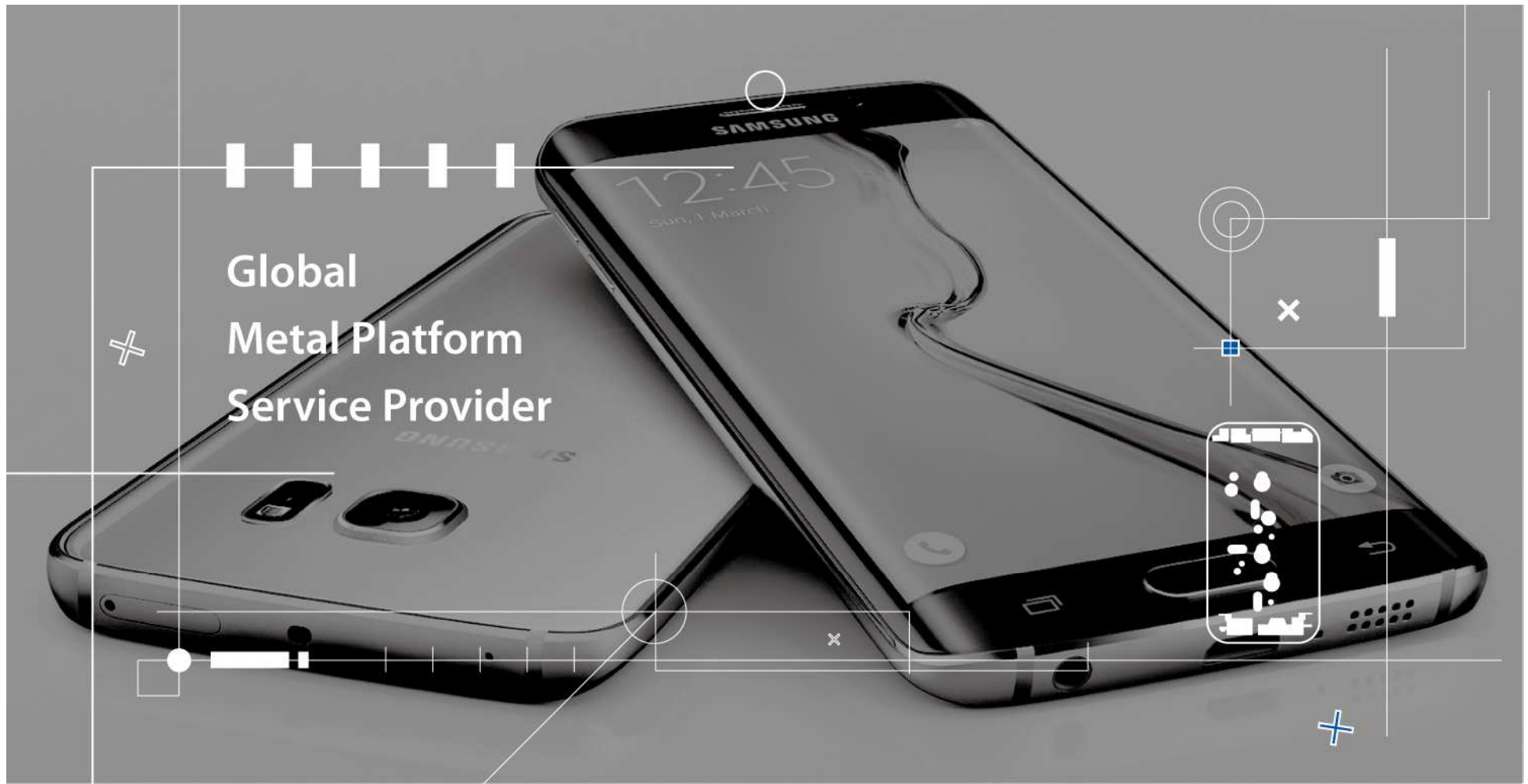


	Seojin System Vina	Seojin Auto	Texon Vina
Main product	Ingot/Telecom/ White goods, Automotive	Automotive parts / Electric vehicle parts	Telecom/Semi conduct/ ESS facility
Floor	41,000m ² (441,300ft ²)	148,500m ² (1,600,000ft ²)	132,000m ² (1,420,800ft ²)
Employees	2,966	2,184	1,148
Est.	Oct., 2011	Nov. 2017	Nov. 2017

Oversea corporation	Seojin Vina
Location	Vietnam BacNinh Province / BacGiang Province



	Seojin Vina 1	Seojin Vina 2	Seojin Vina 3
Main product	Mobile Phone Frame/Assembly		
Floor	15,000m ² (161,500ft ²)	18,000m ² (193,800ft ²)	16,000m ² (172,300ft ²)
Employees	3,161		
Est.	Oct. 2014	Nov. 2014	Dec. 2014



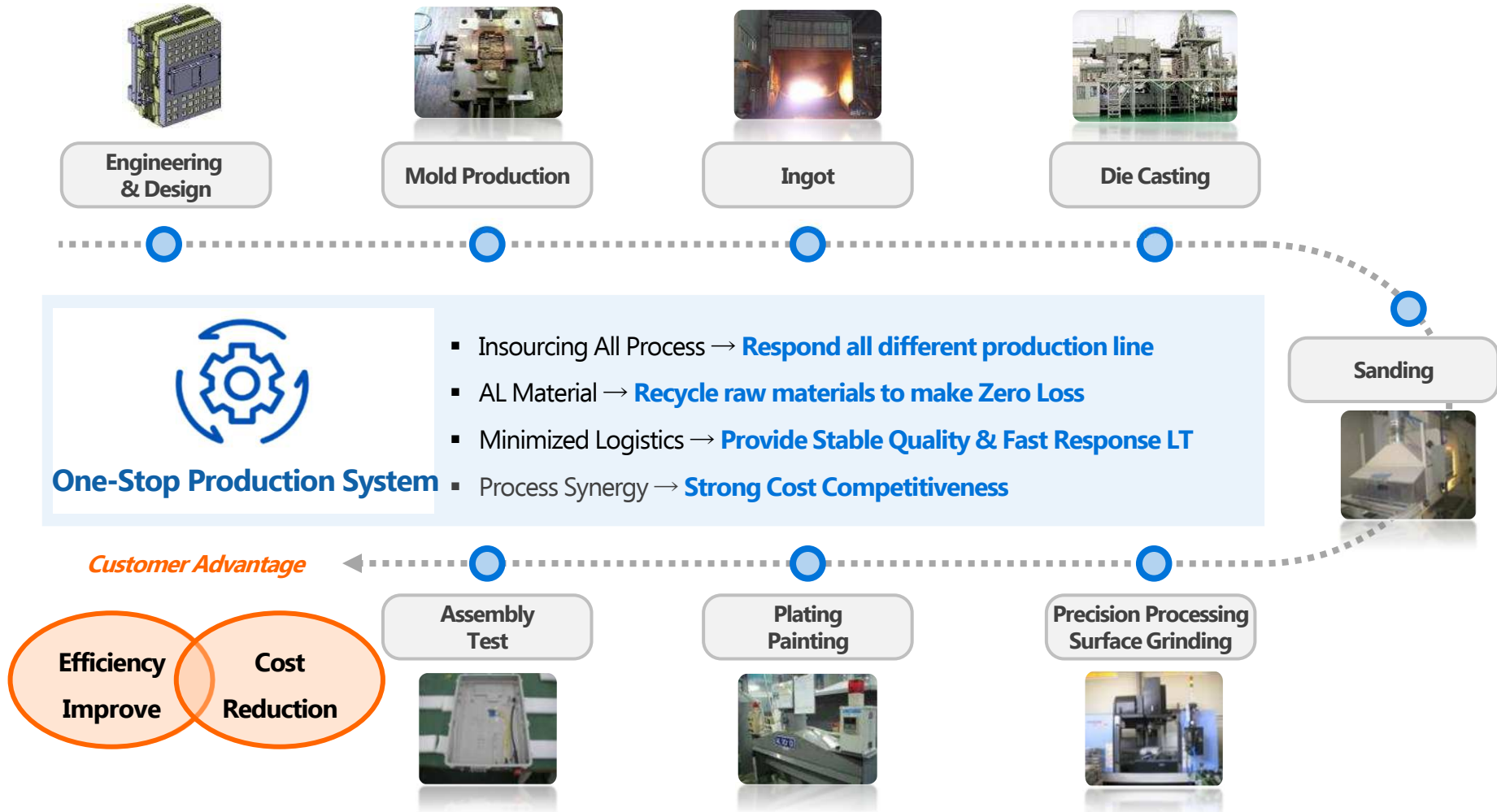
Global
Metal Platform
Service Provider

Chapter2. Machines and Facilities

1. Manufacturing Process Map
2. Production Facilities and Machines
3. Reliability Test Equipment and Facilities

1. Manufacturing Process Map

Vertical Manufacturing Process of Insourcing to **Built ONE-STOP SYSTEM**

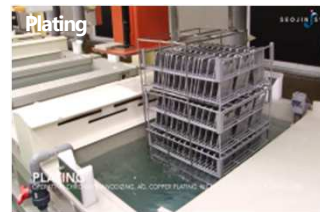


2. Production Facilities and Machines



World's Top Class Facilities and machines to optimize production

Equipment	Spec	Quantity	
		Vietnam	Korea
Melting	20~40ton	3	-
Die-Casting	125-5600ton	91	5
CNC	Tapping Center/ Machine Center No.4-16	2654	47
NCT	0~2500mm	14	2
Laser	0~3000mm	5	2
Water Jet		1	
Bending	0~2500mm	12	5
Injection Machine	55~1300ton	19	
Welding	CO2, SPOT, Argon	32	6
FSW (Friction stir welding)		1	
Press	80~400ton	16	-
Plating	Chromate, Nickel, Chrome, Anodizing, Copper, Silver, Mg, Aluminum, Zinc	17	-
Painting	Liquid, Powder, XY, Spindle, EDC	22	-
SMT	SMT line	3	-

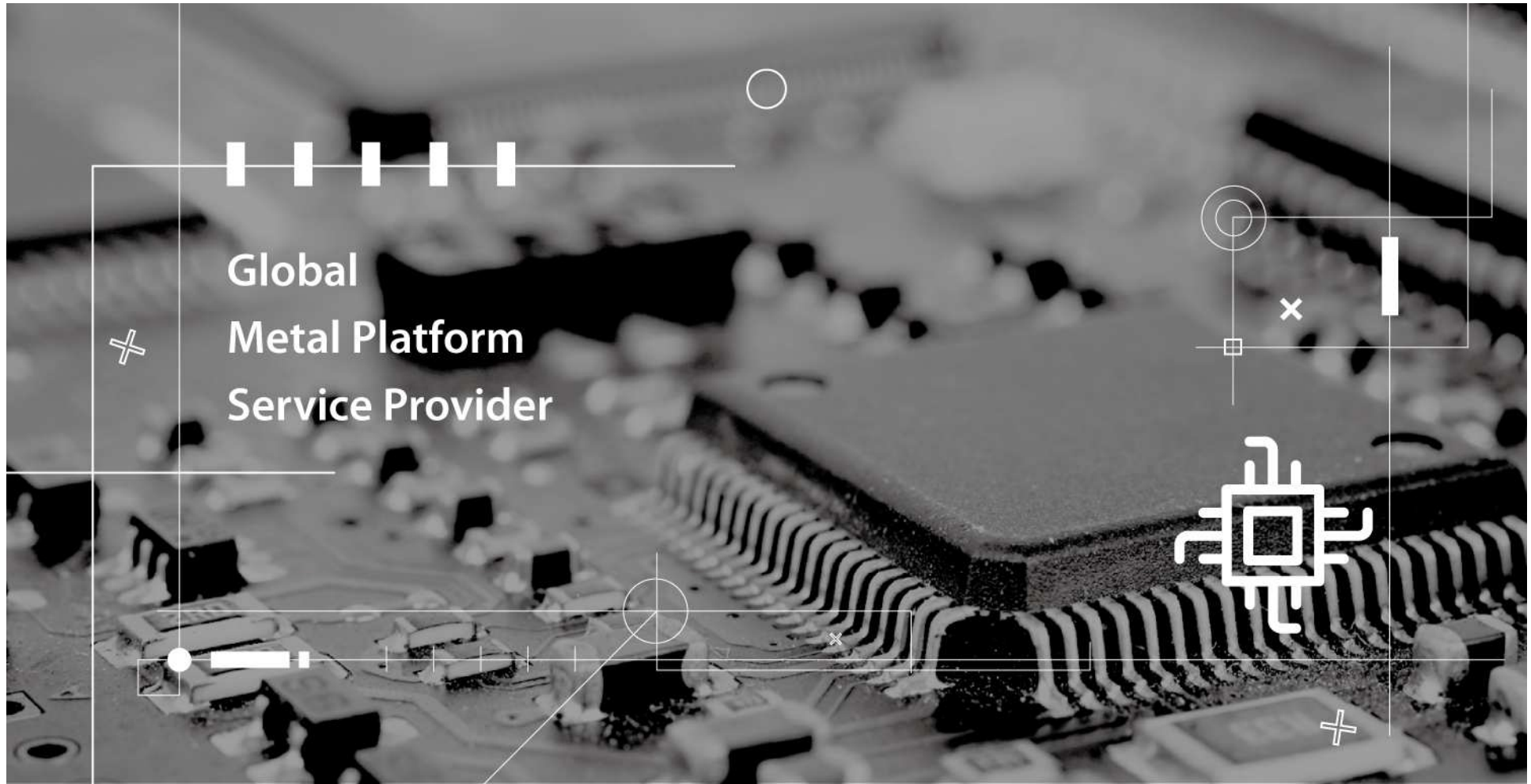


3. Reliability Test Equipment and Facilities

Numerous Equipment to Qualify and Guarantee the Products

Category	Specifications	Quantity	
		Vietnam	Korea
Environment	Humidity Chamber	2	
	High Temp. Chamber	2	1
	Rain Test	1	1
	Salt Spray Test Chamber	2	1
Pressure	Air Leak Test	28	4
Physical	Hardness Test	2	
	Push Pull Test	1	
	Drop Impact Test	1	
	Durable Strength Test	1	
Test	Vision / 3D Measure	3 / 6	1
	X-Ray Test	2	
	Thickness Test	10	1
	Gloss Meter	1	
	Color Meter	2	1
	Granite Plate	10	8
	Material Analyzer (AL)	2	
	XRF Measure	1	
UV Test	1		





Global
Metal Platform
Service Provider

Chapter3. Main Products and Customers

1. Aluminum Alloy & Telecom Equipment
2. LED Case & Mobile Phone
3. Automotive Parts & Cable Harness
4. Semi-con Equip. & ESS Equip.
5. Certifications
6. Main Customers

1. Aluminum Alloy & Telecom Equipment

Aluminum Alloy



Ingot



Ingot



Ingot



Ingot



Liquidify Alloy

Telecom Equipment 1



RRH



RRH



Filter Housing



Repeater



Set top Box Housing



Set top Box

2. Telecom Equipment

Telecom Equipment 2

Telecom Equipment 3



MMBS LTE OUTDOOR



MMBS LTE INDOOR



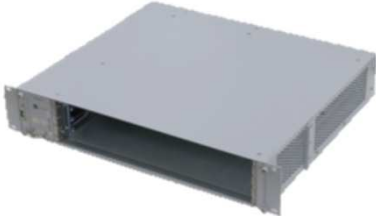
WCDMA OUTDOOR



LGU+ LTE OUTDOOR



4U DU SHELF



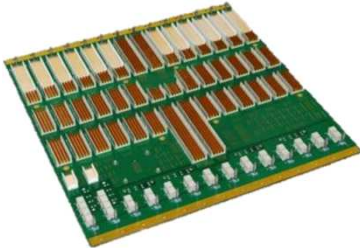
2U DU SHELF



INDOOR FAN



OUTDOOR FAN



BPA



PDP

3. LED Case & Mobile Phone

LED Case(Housing)



Industrial Lighting



Lighting



Industrial Lighting



Sport Lighting



Guard Lighting



Street Light

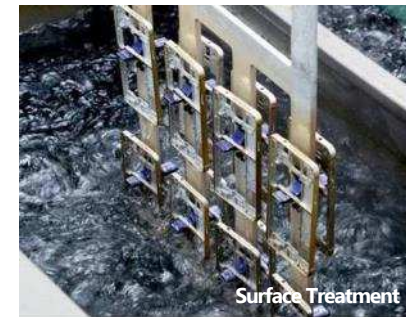
Mobile Frame Processing



Mobile Phone Frame



Mobile Phone Frame



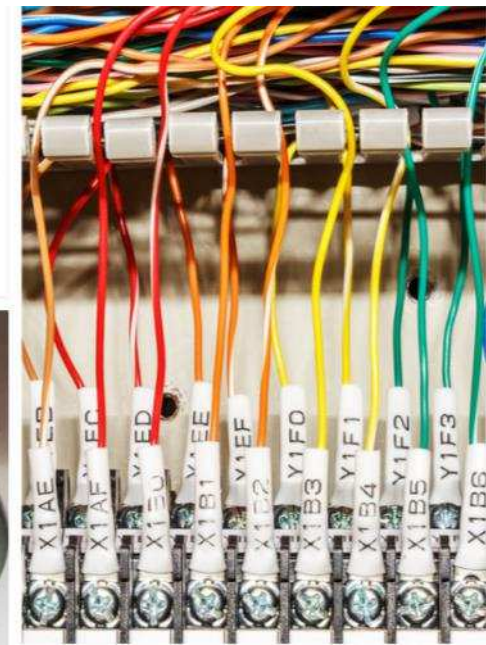
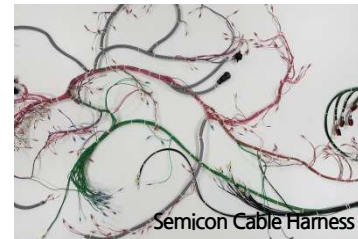
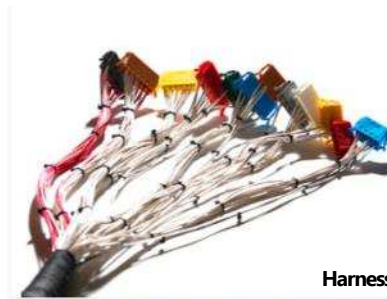
Surface Treatment

4. Automotive Parts & Cable Harness

Automotive Parts



Cable Harness

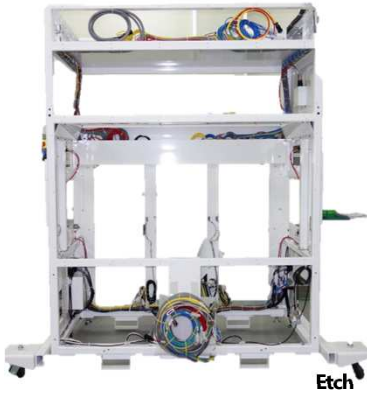


Telecom Power Cable

5. Semicon Equipment & ESS Equipment

Semi-con Equipment

ESS Equipment



Etch



Depo



BCP



UPS



Control Box



Control Box



Control Box



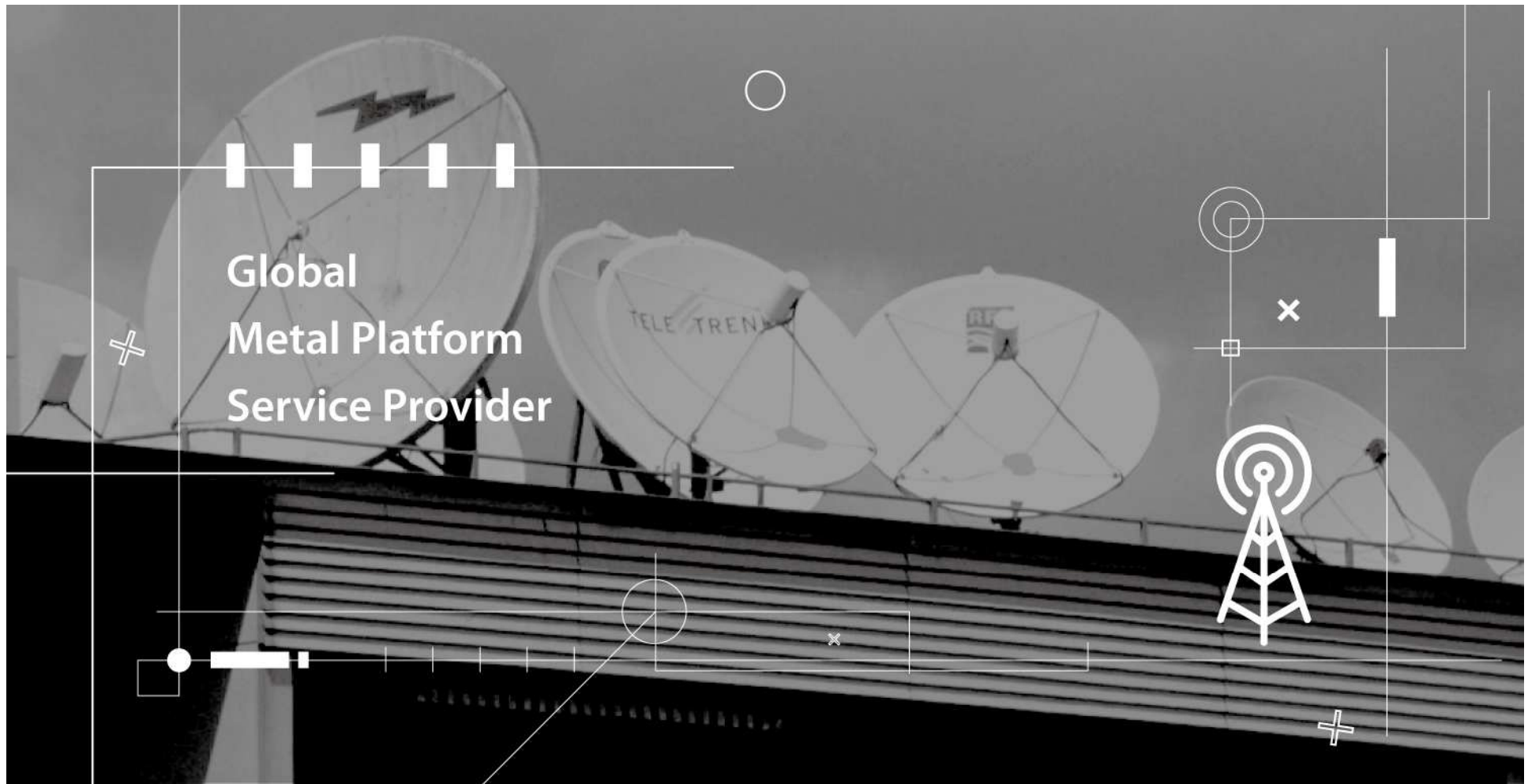
Residential ESS



12 Stack Battery Rack

6. Main Customers





Global
Metal Platform
Service Provider

Chapter4. New production lines and investments

1. New product line (Extrusion, Big size casting and plastic product)
2. New technologies
3. New factory expansion

1-1. New Product Line (Extrusion)

Furnace and material

Machine name	Size	Quantity
Furnace	20 TON	2
Material Casting	20 TON	2
Rotating stabilization	30 TON	1
Monthly Capacity	3,120 TON	

1. Furnace



2. GBF



3. Material



4. Cutting and stabilization



5. Billet



1-1. New Product Line (Extrusion)

Extrusion

Extrusion machine	2,000TON (7")	2
Heat treatment	10TON	2
Monthly Capacity	1,030 TON	

1. 2,000TON Extrusion machine



2. Billet preheating



3. Hot Saw



4. Extrusion



5. cutting



6. Heat treatment

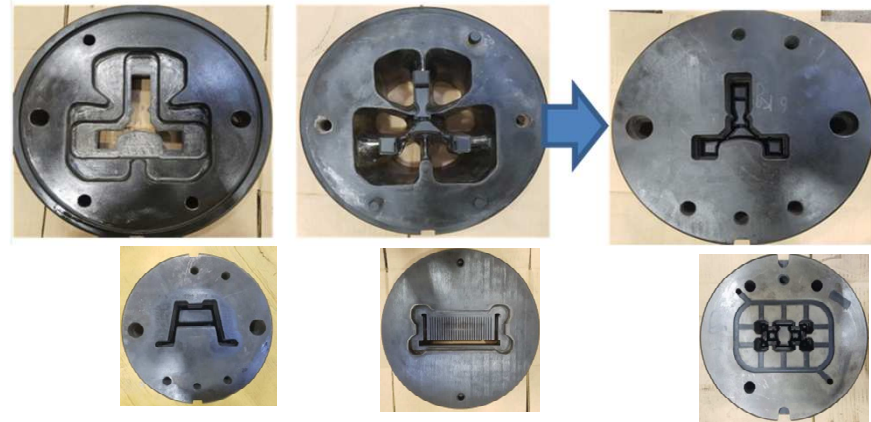


1-1. New Product Line (Extrusion)

Product Size

Type	Width	Height	Exit Size
✓ Rectangle	220mm	20mm	Ø230
	180mm	106mm	
✓ Square	150mm	150mm	
✓ Pipe	Ø170		
✓ Round bar	Ø75		

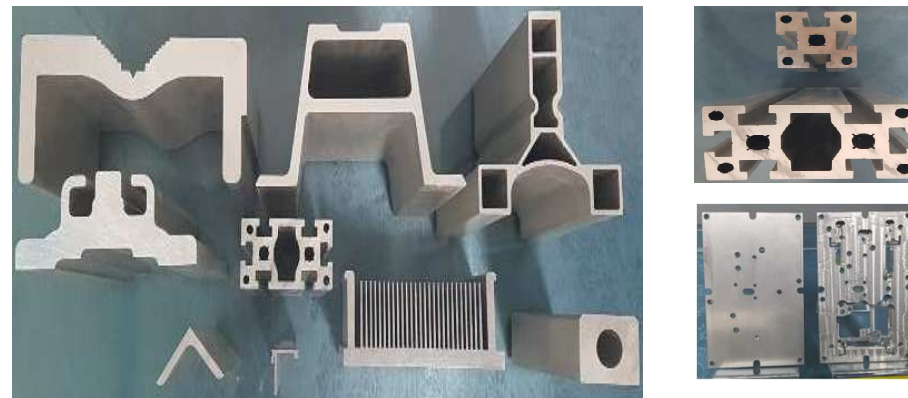
Tool



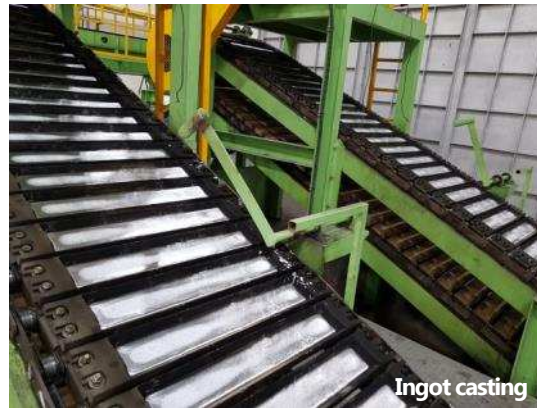
Product list

Product	Material
✓ Telecommunication	A6063 , A6061
✓ Automobile	A6063, A6061
✓ Profile	A6063, A6N01
✓ Heat Sink	A6063
✓ Mobile	A7xxx, A6xxx

Product pictures



Aluminum Alloy Facility



Production Amount	Production Type
MAX 3,000ton/month	Ingot / Liquid

Die-Casting Facility

Manufacturer	Spec.	Quantity	
		Vietnam	Korea
Toshiba	125 Ton	8	-
	200 Ton	3	-
	250 Ton	9	1
	350 Ton	26	1
	500 Ton	3	-
	650 Ton	7	-
	800 Ton	17	
	850 Ton		1
	1250 Ton	6	1
	1650 Ton	4	1
	2250 Ton	2	
	3500 Ton	6	-
	5600 Ton	2(Dec. 2020)	
Total		91	5



MCT Facility

Manufacturer	Quantity	
	Vietnam	Korea
Doosan	1,003	-
Brother	316	35
Fanuc	853	-
UGint	54	-
UGint (4 simultaneous drills)	40	-
Hyundai-Wia	29	6
Diamond-Tipped Cutter	50	-
DooSan (No.7 ~ No.27)	157	3
Other	152	3
Total	2654	47



Sheet Metal Fabrication

Manufacturer	Category	Quantity	
		Vietnam	Korea
AMADA	NCT	11	2
	LASER	5	1
	Bending	12	2
	Tapping	3	1
	Welding	26	4
	PEM Press	7	3
GEUMSUNG / SSANGYOUNG	Press(80~400ton)	16	-



Press



Laser



NCT



Welding

Plastic Facility

Manufacturer	Category	Quantity	
		Vietnam	Korea
BONA	178 ton	5	-
Fanuc	180ton	4	
WOOJIN	55 ton	1	
	85ton	1	
	130ton	1	
	150ton	1	
	900ton	1	
	1300ton	1	
HYUNDAI	150ton	1	-
	350ton	1	-
	450ton	1	-
JINHWA	650ton	1	-
total		19	-



Plating Painting

Category	Spec.	Line Quantity
Plating	Chromate	1
	Nickel	1
	Chrome	1
	Anodizing	3
	Copper	5
	Silver	1
	Magnesium	1
	Zinc	1
	Aluminum	1
Painting	Liquid	6
	Powder	14
	XY Line	1
	Spindle Line	1



Cable Assembly Facility



SMT Line



Assembly

Category	Vietnam	Korea
Assembly Area	6,600㎡	3,900㎡
Available Work Force	6,000 People+	300 People+
Manufacturing Method	Both Lean/Cell Lines can be Setup.	



LEAN Line



Mechanical LEAN Line



Mechanical Cell Line



LEAN Line